



## 78 Wilsdon Way, Kidlington, Oxon, OX5 1TX

£1,100 PCM - 9th January 2026

- One bedroom
- Garden
- Council Tax B
- Furnished
- Parking for one car
- Mains electricity and water
- Electric heating
- EPC rating D

# 78 Wilsdon Way, Oxon OX5 1TX

Situated in this quiet location close to buses for City Centre, Headington hospitals and Oxford Parkway station, a one bedroom house in good condition throughout and available fully furnished. Double bedroom, Bathroom, Living/Dining room, Electric heating. Garden. Allocated parking for 1 car and on street parking.

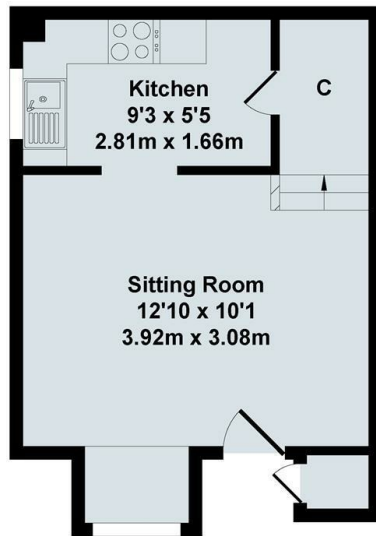


Council Tax Band: B

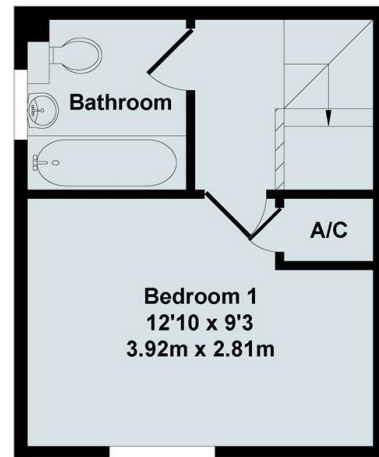


Situated in this quiet location close to buses for City Centre, Headington hospitals and Oxford Parkway station, a one bedroom house in good condition throughout available fully furnished. Double bedroom, Bathroom with shower over, Living/Dining room, Fully fitted Kitchen, Electric heating. Garden. Allocated parking for 1 car and on street parking.





Ground Floor



First Floor



Total Approx. Floor Area 425 Sq.Ft. (39.50 Sq.M.)

All items illustrated on this plan are included in the "Total Approx Floor Area"

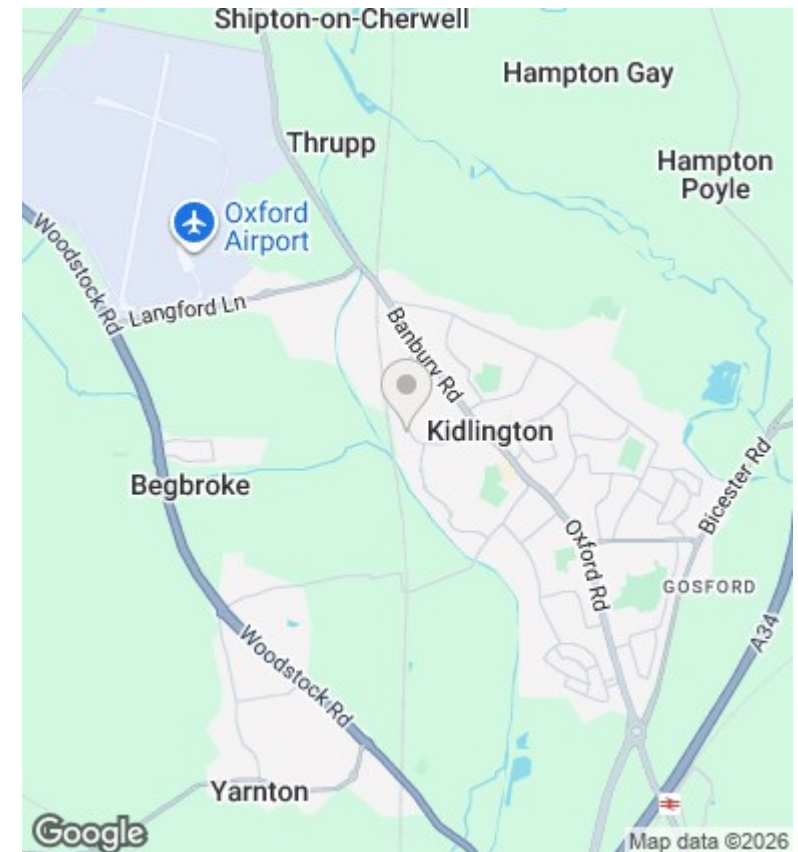
## Directions

## Viewings

Viewings by arrangement only. Call 01865 515900 to make an appointment.

## Council Tax Band

B



Energy Efficiency Rating		
	Current	Potential
Very energy efficient - lower running costs		
(92 plus) <b>A</b>		<b>95</b>
(81-91) <b>B</b>		
(69-80) <b>C</b>		
(55-68) <b>D</b>	<b>61</b>	
(39-54) <b>E</b>		
(21-38) <b>F</b>		
(1-20) <b>G</b>		
Not energy efficient - higher running costs		
England & Wales		EU Directive 2002/91/EC